

# hydration monitor operation guide

an instant, accurate way to measure skin's moisture content,  
helping you better assess needs and measure results

Pure marine ingredients meet total  
quality control. Effects multiply. You win.


真  
OMOJO

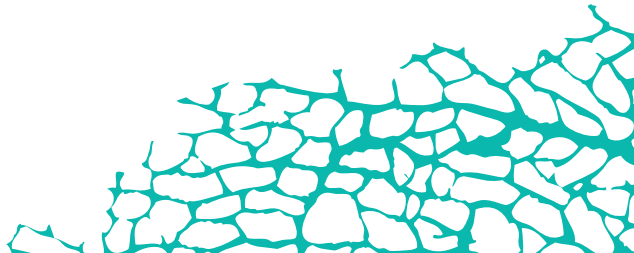


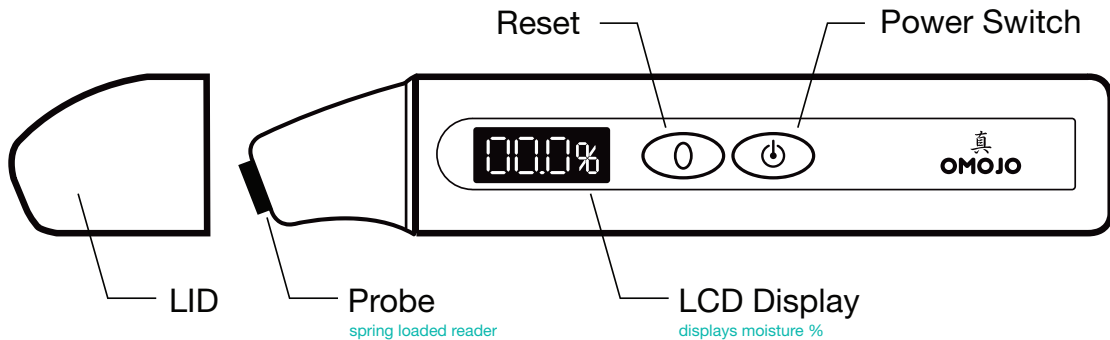
Imagine. A sophisticated sustainable company built on 5,000 years of wisdom. Nature's wild gifts balanced with a passion for end-to-end control. When outer and inner worlds come together, effects multiply. Harmony is unleashed.

You benefit.

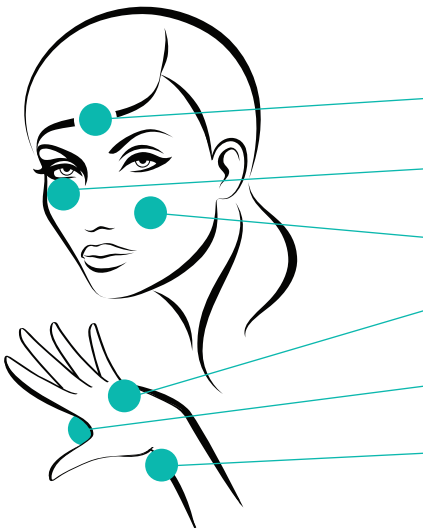
## Instructions:

- 1 Make certain your skin is completely clean and dry. Chose an area with little or no hair.
- 2 Remove cap.
- 3 Press power button  . You'll hear one short beep. Wait until the LCD display shows 00.0% and two beeps are heard.
- 4 Press the monitor onto the skin, keeping it perpendicular to your skin's surface and hold for a few seconds until you hear one long beep. The digital display will indicate your skin's moisture percentage.
- 5 To perform another check, press the reset "0" button and repeat.
- 6 Gently wipe the surface of the monitor with a soft cloth following each measurement and replace cap to store.





\*Requires two AAA batteries. Batteries not included. Image not show at actual size.



## Target Meter Ratings by Season

	Spring and Fall	Summer	Winter
1	<b>Area 1</b> forehead 35-55%	<b>Area 1</b> 40-60%	<b>Area 1</b> 30-50%
2	<b>Area 2</b> under eye 45-55%	<b>Area 2</b> 50-60%	<b>Area 2</b> 40-50%
3	<b>Area 3</b> cheek 35-55%	<b>Area 3</b> 40-60%	<b>Area 3</b> 30-50%
4	<b>Area 4</b> top of hand 35-55%	<b>Area 4</b> 40-60%	<b>Area 4</b> 30-50%
5	<b>Area 5</b> wrist 40-50%	<b>Area 5</b> 45-55%	<b>Area 5</b> 35-45%
6	<b>Area 6</b> palm 45-65%	<b>Area 6</b> 50-65%	<b>Area 6</b> 40-55%

## Additional information

Low batteries are indicated by “LO” on the LCD display. Replace batteries when indicated.

Errors are indicated by “UUU” on the LCD display. Retry reading.

Don't use on injuries or broken skin.

## Maintenance

Clean probe regularly

Store in a cool, dry place

For your safety, do not disassemble product

Remove batteries for long periods of disuse

Distributed by:

Omojo Health USA,

4675 MacArthur Court, Suite 1250,

Newport Beach, CA 92660

1-877-737-8903

[www.omojohealthusa.com](http://www.omojohealthusa.com)



HACCP



MARINE  
SUSTAINABLE

